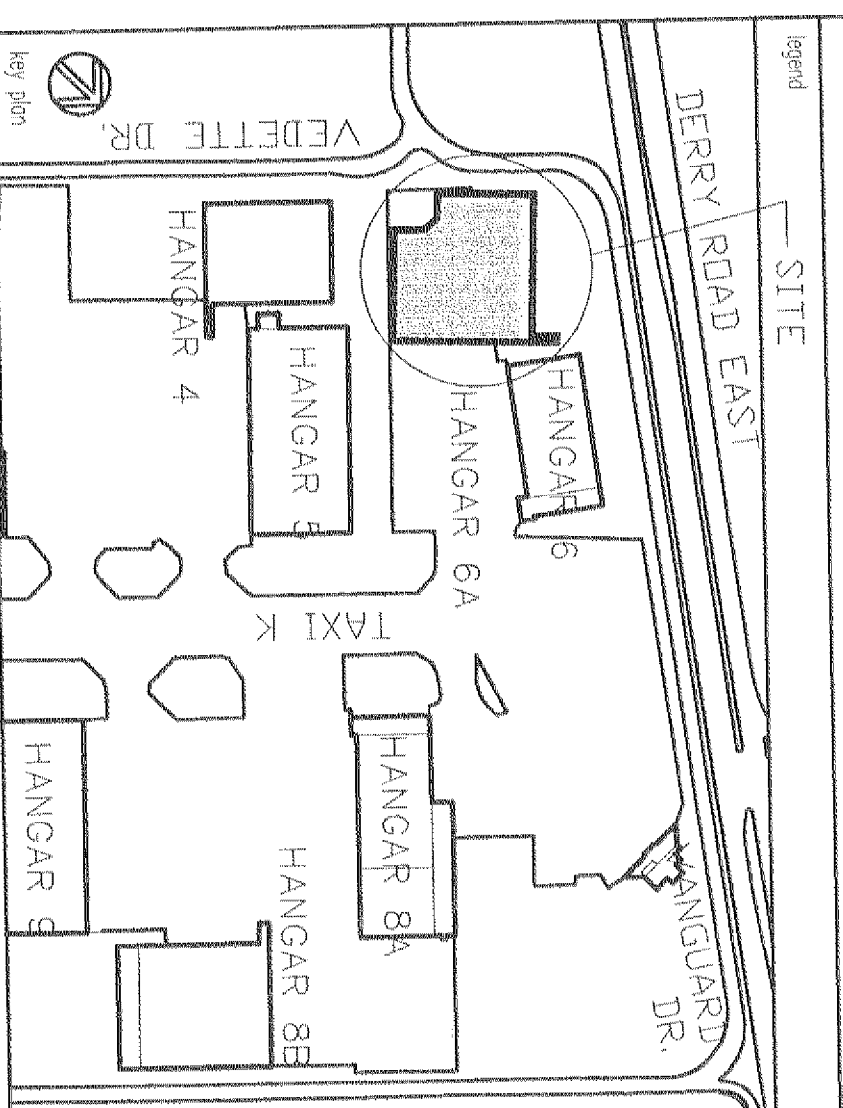
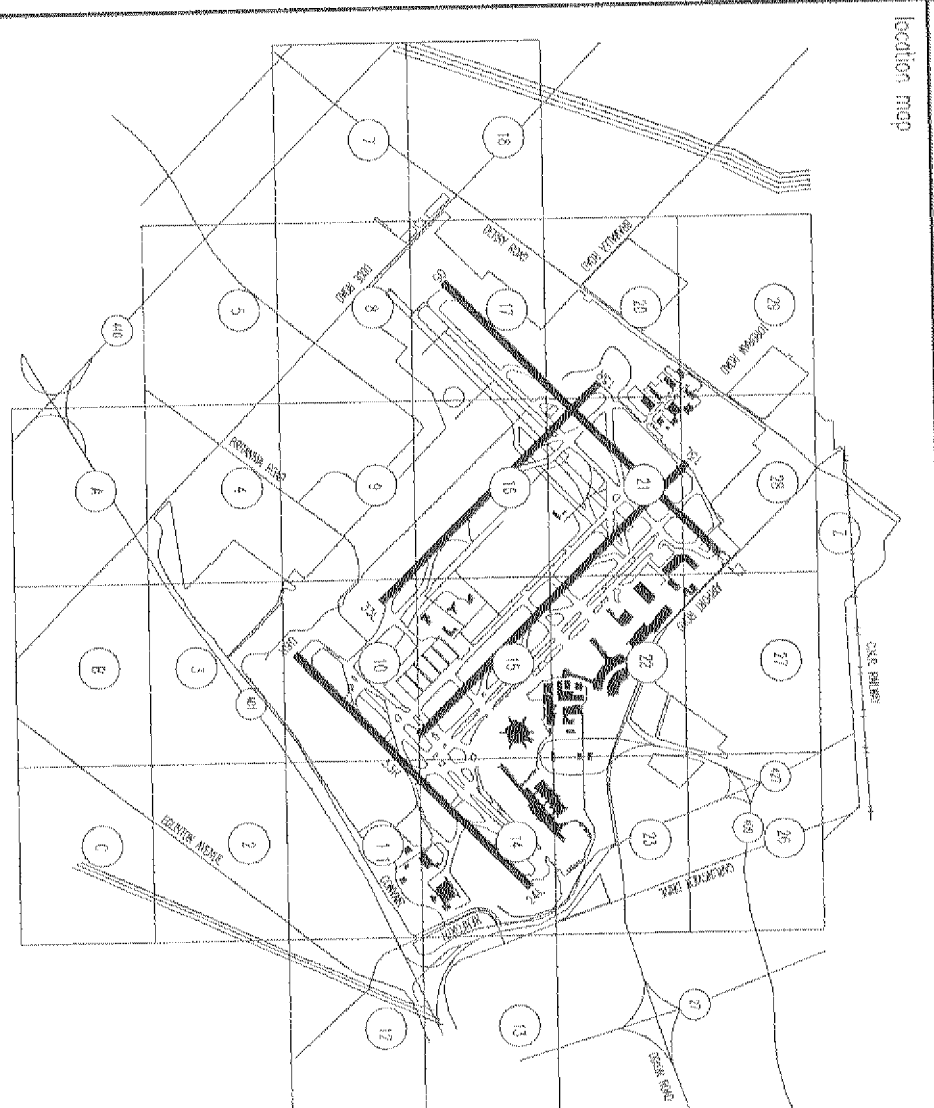




Greater Toronto
Airports Authority

Technical Data Centre

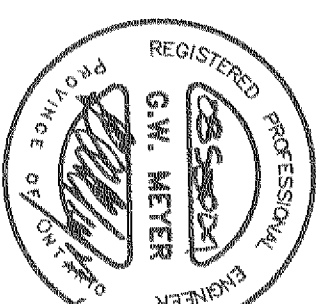


NO.	BY	DATE	DESCRIPTION
1	J.W.	04-08-05	ISSUED FOR REVIEW
2	J.W.	06-15-04	ISSUED FOR REVIEW
3	J.W.	08-11-04	ISSUED FOR REVIEW

ALLIANCE CONSTRUCTION GROUP

5945 AIRPORT ROAD, SUITE #177, MISSISSAUGA, ONTARIO

novus
Fire Protection Consulting Ltd.
110 Woodbine Drive, Suite 100, Mississauga, ON L4W 1L5
Tel: 905.276.8888 Fax: 905.276.8888



TORONTO PEARSON
INTERNATIONAL AIRPORT

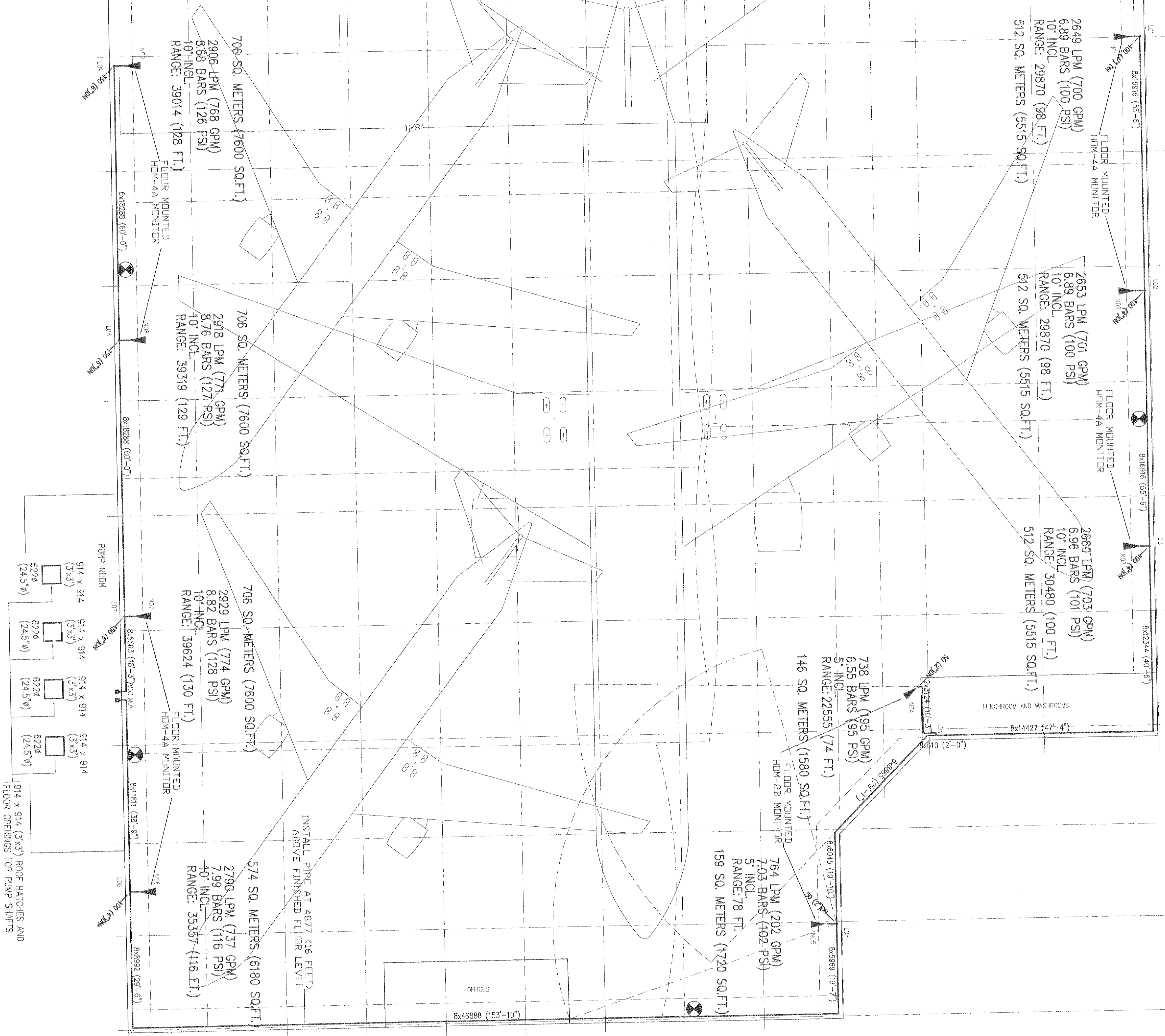
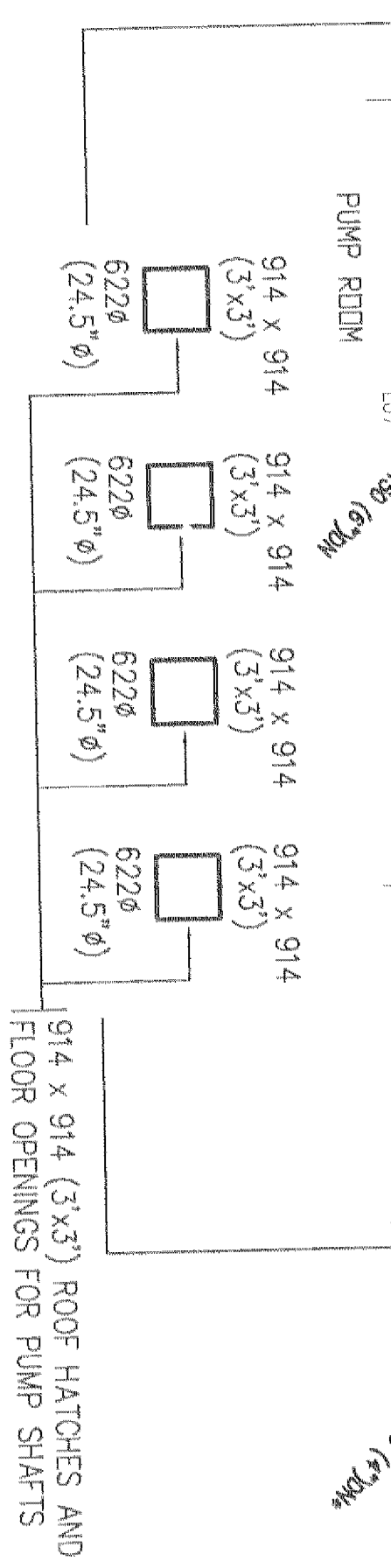
SKY SERVICE AIRLINES HANGAR
PUMP STATION AND RESERVOIR

FLOOR PLAN SPRINKLER SYSTEM

Scale: 1:128 (3/32" = 1'-0")

Drawn by: J.W.	Checked by: D.A.	Designed by: D.A.	Date: AUG. 4/04
Contract No: 04-085	Project No: SP-4	Revision: 06	Date: AUGUST 2004

⊗ DENOTES INFRARED MULTISPECTRUM IR FLAME DETECTOR X3301 MANUFACTURED BY DET-TRONICS, FACTORY MUTUAL APPROVED, UIC LISTED. DETECTORS TO INCLUDE ADDRESSABLE FIRE RELEASE CONTROL PANEL. ELECTRICAL WORK IS TO BE INCLUDED BY THE FIRE PROTECTION CONTRACTOR. CO-ORDINATE WITH DIVISION 16. ALL DESIGN AND INSTALLATION TO MEET THE REQUIREMENTS OF N.F.P.A. NO. 72E AND 409, FACTORY MUTUAL AND MANUFACTURER DATA.



FLOOR PLAN
SCALE 1:128 (3/32" = 1'-0")